

NOTE

Workstation
by
bürotime

technical document



NOTE Workstation



Arif Akıllılar



Utkan Kızıltuğ

Note Workstation, which has a strong skeleton structure where design is at the forefront, comes to the fore with its high quality aesthetics. Thanks to its boutique office projects and its wide product range, it will have no trouble finding its place in the most prestigious designs of architects in projects where meeting and executive groups are also located. RedDot, IF, German Design and Design Turkey award-winning leg structure and the originality in the details of the partition panels provide a unique harmony. Note Workstation, which is a candidate to be the perfect fit for those looking for originality in operational work, will undoubtedly be one of the indispensable parts of offices with its different combination options.



Note Workstation family blends a simple design language with its strong stance, adding an aesthetic appearance and prestige to common work areas. The award-winning foot design supports employees ergonomically and cable detail solutions create tidy spaces. There are different combination options in the product family, from a two-person table to a six-person table. Thanks to the table top positioned at the head, it strengthens the interaction and communication in the working environment and raises productivity to the highest level. Intermediate panels with wide color and fabric alternatives not only add color to offices, but also protect acoustics by creating personal work areas.



product family

tables



note - two-top workstation
70*160 / 70*180



note - three-top workstation
with head table
70*140



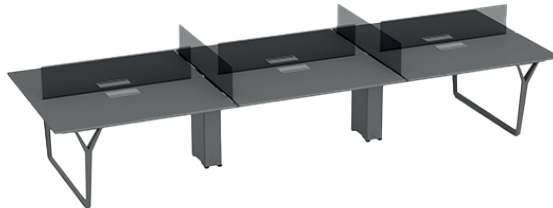
note - four-top workstation
70*140 / 70*160



note - four-top workstation
with head table
70*140



note - five-top workstation
with head table
70*140



note - six-top workstation
70*140 / 70*160



note - six-top workstation
with head table
70*140

panels



note panel for L:140 workstation
120*30



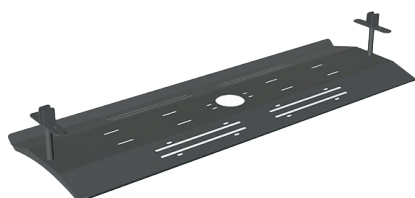
note panel for L:160 workstation
140*30



note panel for L:180 workstation
160*30

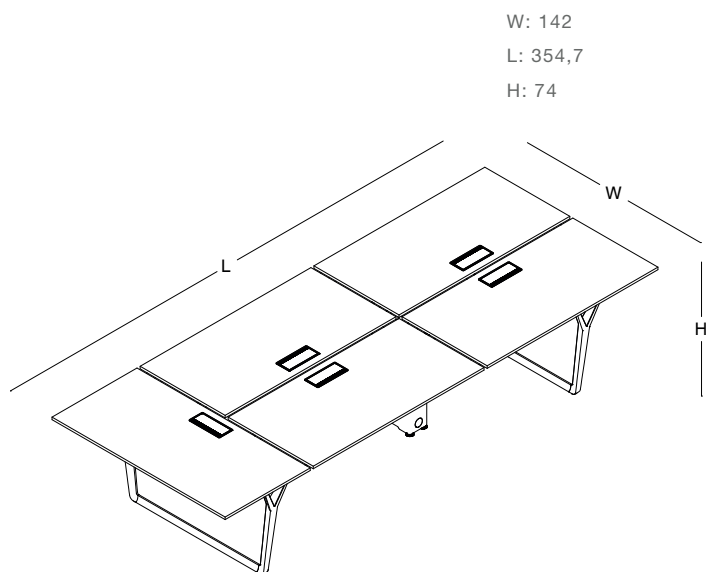
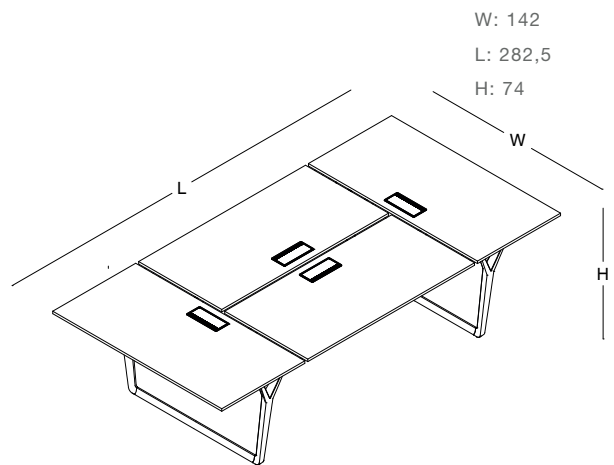
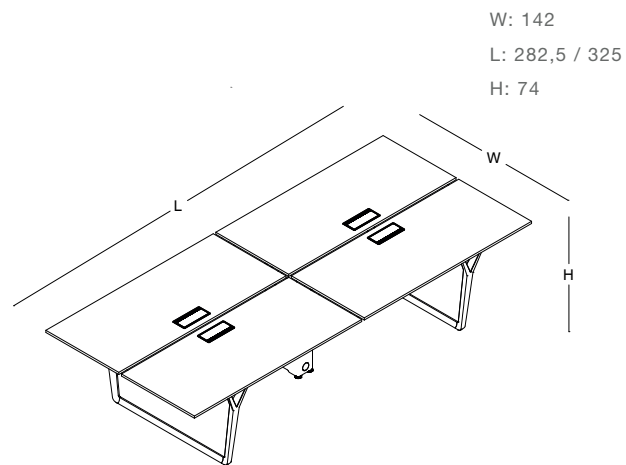
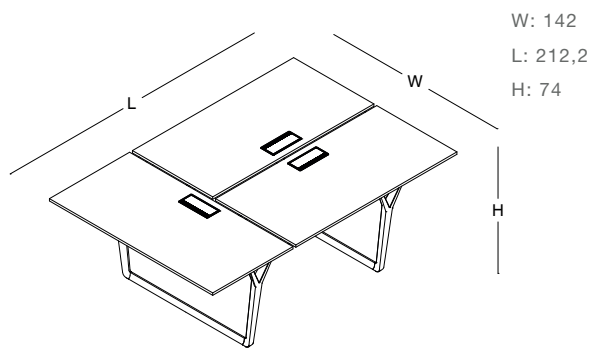
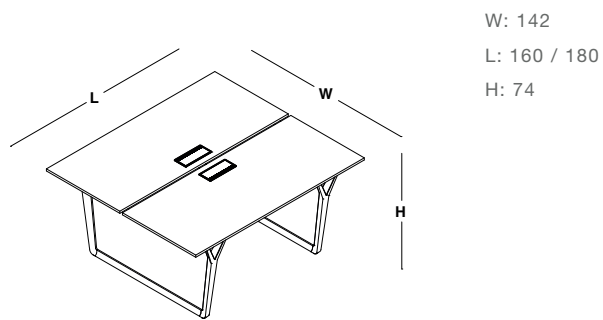


note u shaped connector



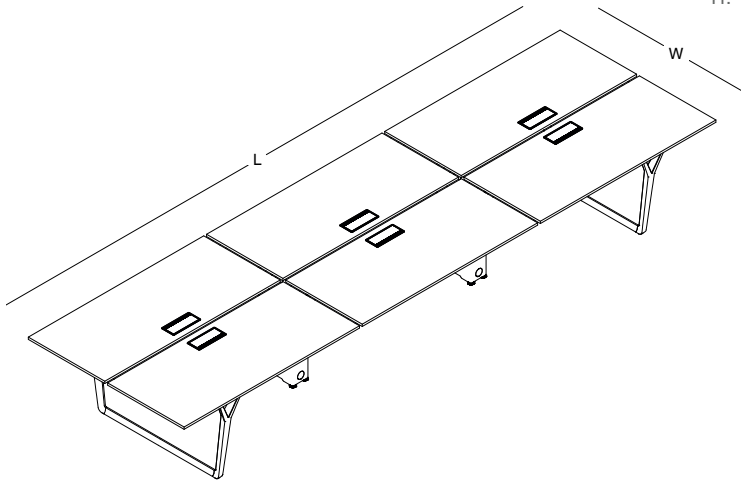
note cable tray for workstation
140 / 160

size chart _____

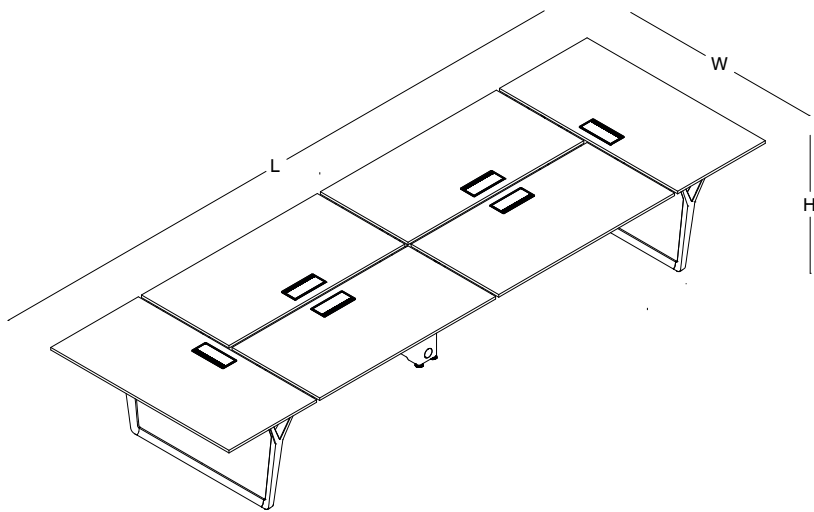


size chart _____

W: 142
L: 425 / 485
H: 74

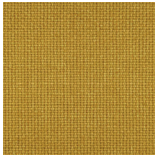


W: 142
L: 427
H: 74

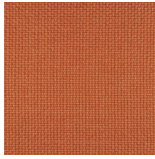


color options _____

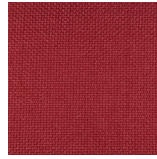
panama - panel



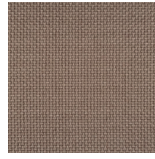
P 101
yellow



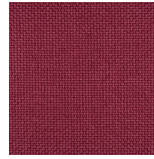
P 102
orange



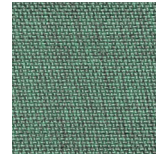
P 104
red



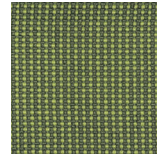
P 301
light brown



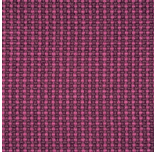
P 106
burgundy



P 110
green



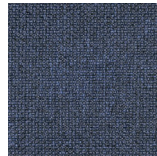
P 405
punti green



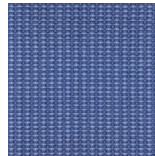
P 402
punti pink



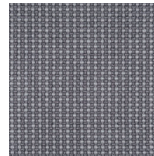
P 302
pink



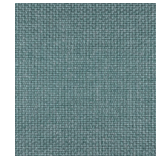
P 114
dark blue



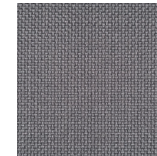
P 406
punti blue



P 403
punti grey



P 111
turquoise



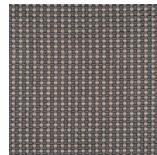
P 308
anthracite



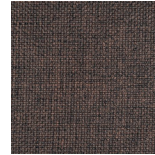
P 115
black



P 108
mustard



P 401
punti brown



P 109
dark brown

bloom - panel



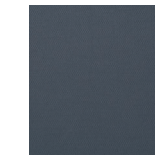
BL 2302
orange



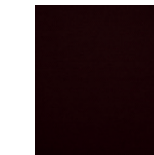
BL 2305
yellow



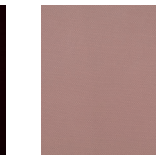
BL 2310
red



BL 2315
anthracite



BL 2316
dark brown



BL 2322
salmon



BL 2324
light grey



BL 2334
mint green



BL 2327
black



BL 2338
blue



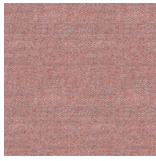
BL 2409
light brown

color options _____

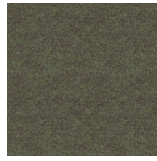
camira synergy - panel



LDS07
lilac



LDS74
coral



LDS48
olive



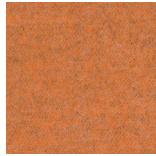
LDS46
lemon



LDS37
cocoa



LDS33
mink



LDS83
light orange



LDS39
dark brown

felt - panel



W 102
coral



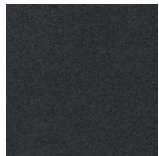
W 202
brown



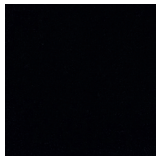
W 203
green



W 104
grey



W 105
anthracite



W 106
black



W 207
purple



W 205
dark blue

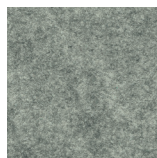


W 208
blue

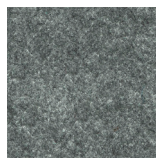
sonus - panel



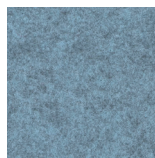
SN101
yellow



SN103
light grey



SN104
dark grey



SN106
ice blue



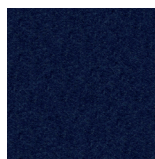
SN107
dark beige



SN111
turquoise



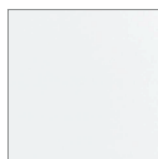
SN112
apple green



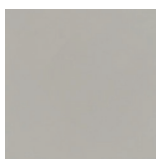
SN116
navy blue

color options _____

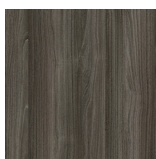
melamine - table top



white



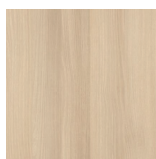
sand



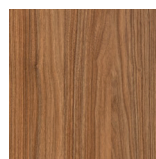
ash oak



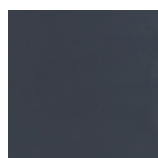
oleaster



acacia



samba walnut



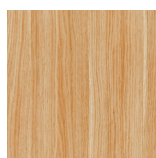
anthracite



hazelnut



grey

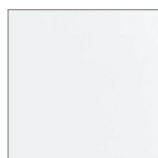


natural oak

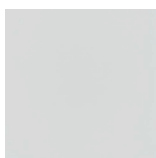


ontario

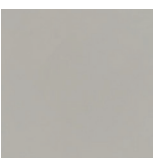
metal - stand



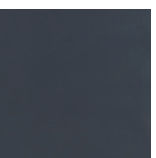
white



grey



sand



anthracite



black



green



blue